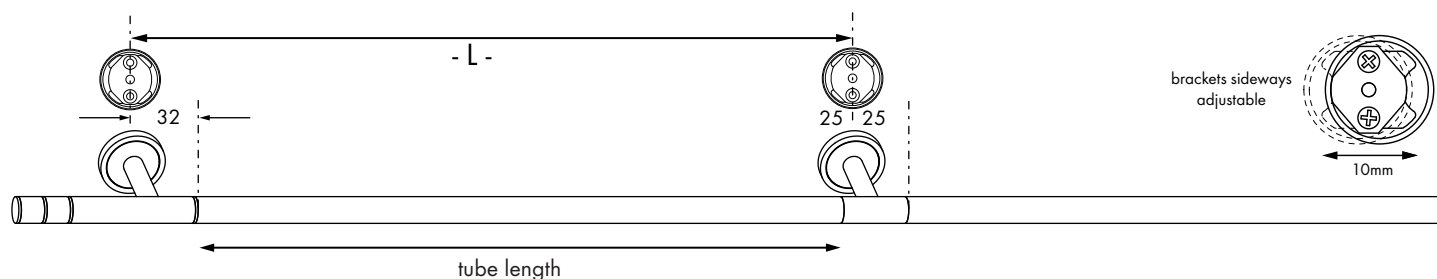


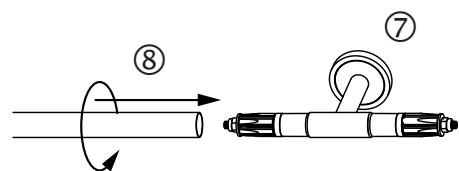
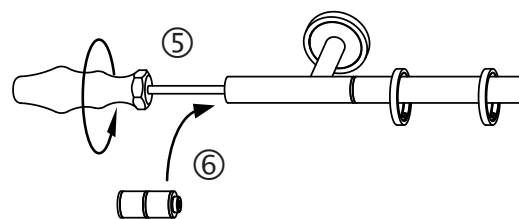
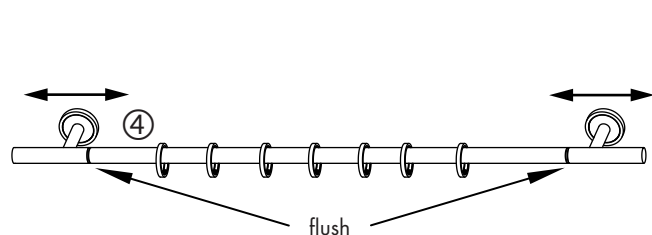
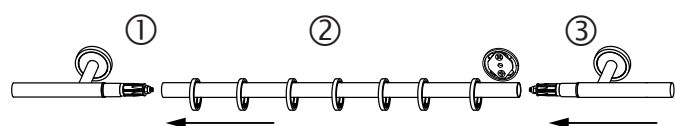
Dimensions for wall installation



Distances between base plates:

Without intermediate bracket: $L = \text{tube length} + 64 \text{ mm} (32 + 32)$

With intermediate bracket: $L = \text{tube length} + 57 \text{ mm} (32 + 25)$



Installation procedure

Without intermediate bracket

1. Attach one bracket to the wall ①
2. Attach the tube ②
3. Install the second bracket ③ (slide the curtain rings on beforehand)
4. Adjust the brackets at the sides until the tube and the brackets are flush with one another ④
5. Secure the brackets with screws ⑤
6. Screw on the finials ⑥

With intermediate bracket

1. Attach the intermediate bracket to the wall ⑦
2. Attach the tube and turn it until it is secure ⑧
3. Install the end brackets ① + ③ (slide the curtain rings on beforehand)
4. Adjust the brackets at the sides until the tube and the brackets are flush with one another ④
5. Secure the brackets with screws ⑤
6. Screw on the finials ⑥